

Omega Villas Condominium Association

1713 NW 72 Avenue,
Plantation, FL 33313

Windows Evaluation Report

BLDGs 1 to 15

(07/23/2025)



Windows Evaluation Summary

General Observations and Recommendations :

1. Majority of windows are over 40 years old.
2. Most windows are non-impact rated and do not meet current Florida Building Code (FBC).
3. Common signs of deterioration include:
 - *Cracked or missing weatherstrips.*
 - *Broken and/or cracked Glass at several windows.*
 - *Foggy or leaking glass (seal failure).*
 - *Rusted or damaged frames.*
 - *Inoperative or loose latches.*
 - *Air and water infiltration through the window.*
4. Few units already have new impact-rated windows performing well.
5. It is S&D's recommendation that all existing non-impact windows should be replaced with new Impact Windows which meets the current FBC. However, in order to meet the 40/50-year re-certification requirements, these windows does not need to be replaced unless otherwise broken or defected.
6. All new window installations must be permitted and completed by licensed contractor.

BLDG #1

Omega Villas Condominium

Phase No.: 01

Building No.: 01

Unit No.: 1701

Date: 06/20/2025

General Comments:

☐ Pass

☒ Fail

The windows are approximately 40 years old and show typical signs of aging, including potential air and water leakage, degraded seals, reduced energy efficiency, and possible corrosion and/or frame deterioration.

Window Inspection

Component Decision	Good	Bad	Unknown
Window Frame		✗	
Latch			✗
Weather Strip		✗	
Sill		✗	
Glass	✗		

PHOTOS:



Photo 1 : Existing non-impact-rated window frame



Photo 2 : Existing non-impact-rated window frame



Photo 3 : Existing non-impact-rated window frame



Photo 4 : Existing non-impact-rated window frame

Omega Villas Condominium

Phase No.: 01

Building No.: 01

Unit No.: 1705

Date: 06/20/2025

General Comments:

☐ Pass

☒ Fail

The windows are approximately 40 years old and show typical signs of aging, including potential air and water leakage, degraded seals, reduced energy efficiency, and possible corrosion and/or frame deterioration.

Window Inspection

Component Decision	Good	Bad	Unknown
Window Frame		✗	
Latch			✗
Weather Strip		✗	
Sill		✗	
Glass	✗		

PHOTOS:



Photo 1 : Existing non-impact-rated window frame

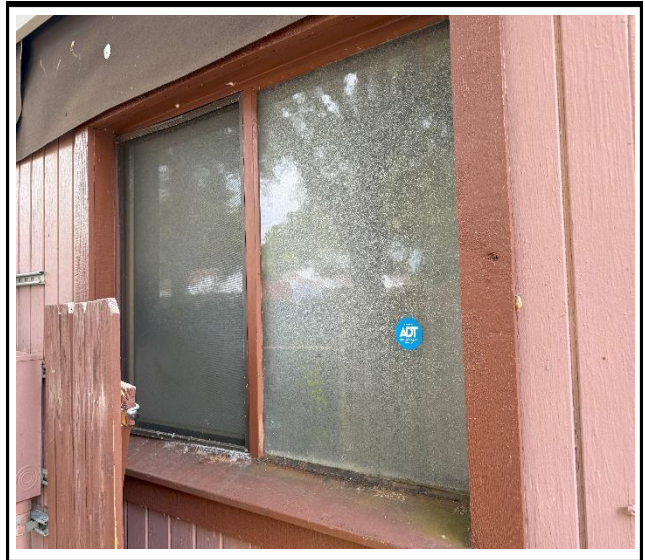


Photo 2 : Existing non-impact-rated window frame



Photo 3 : Existing non-impact-rated window frame



Photo 4 : Existing non-impact-rated window frame

Omega Villas Condominium

Phase No.: 01

Building No.: 01

Unit No.: 1709

Date: 06/20/2025

General Comments:

☒ Pass

☐ Fail

New impact-resistant windows have been installed.

Window Inspection

Component Decision	Good	Bad	Unknown
Window Frame	✘		
Latch			✘
Weather Strip	✘		
Sill	✘		
Glass	✘		

PHOTOS:



Photo 1: Existing Window



Photo 2: Existing Window

Omega Villas Condominium

Phase No.: 01

Building No.: 01

Unit No.: 1713

Date: 06/20/2025

General Comments:

☐ Pass

☒ Fail

The windows are approximately 40 years old and show typical signs of aging, including potential air and water leakage, degraded seals, reduced energy efficiency, and possible corrosion and/or frame deterioration.

Window Inspection

Component Decision	Good	Bad	Unknown
Window Frame		✗	
Latch			✗
Weather Strip		✗	
Sill		✗	
Glass		✗	

PHOTOS:



Photo 1 : Existing non-impact-rated window frame



Photo 2 : Existing non-impact-rated window frame

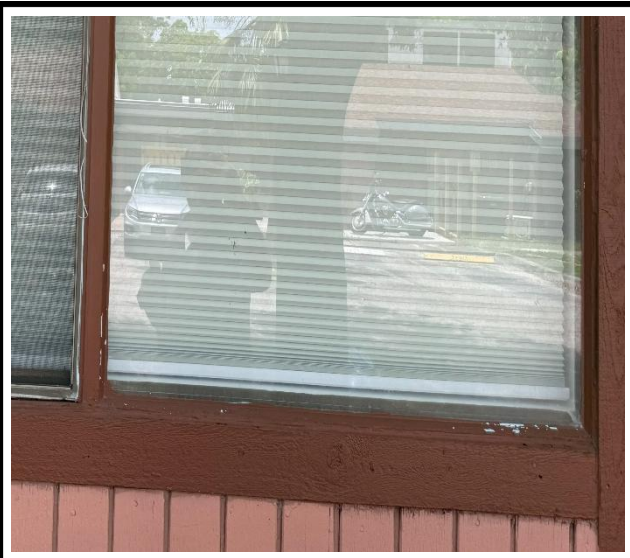


Photo 3 : Existing non-impact-rated window frame



Photo 4 : Existing non-impact-rated window frame

Omega Villas Condominium

Phase No.: 01

Building No.: 01

Unit No.: 1717

Date: 06/20/2025

General Comments:

☐ Pass

☒ Fail

The windows are approximately 40 years old and show typical signs of aging, including potential air and water leakage, degraded seals, reduced energy efficiency, and possible corrosion and/or frame deterioration.

Window Inspection

Component Decision	Good	Bad	Unknown
Window Frame		✗	
Latch			✗
Weather Strip		✗	
Sill		✗	
Glass	✗		

PHOTOS:



Photo 1 : Existing non-impact-rated window frame



Photo 2 : Existing non-impact-rated window frame



Photo 3 : Existing non-impact-rated window frame



Photo 4 : Existing non-impact-rated window frame

BLDG #2

Omega Villas Condominium

Phase No.: 01

Building No.: 02

Unit No.: 1737

Date: 06/20/2025

General Comments:

☐ Pass

☒ Fail

The windows are approximately 40 years old and show typical signs of aging, including potential air and water leakage, degraded seals, reduced energy efficiency, and possible corrosion and/or frame deterioration.

Window Inspection

Component Decision	Good	Bad	Unknown
Window Frame		✗	
Latch			✗
Weather Strip		✗	
Sill		✗	
Glass	✗		

PHOTOS:



Photo 1 : Existing non-impact-rated window frame



Photo 2 : Existing non-impact-rated window frame



Photo 3 : Existing non-impact-rated window frame



Photo 4 : Existing non-impact-rated window frame

Omega Villas Condominium

Phase No.: 01

Building No.: 02

Unit No.: 1733

Date: 06/20/2025

General Comments:

☐ Pass

☒ Fail

The windows are approximately 40 years old and show typical signs of aging, including potential air and water leakage, degraded seals, reduced energy efficiency, and possible corrosion and/or frame deterioration.

Window Inspection

Component Decision	Good	Bad	Unknown
Window Frame		✗	
Latch			✗
Weather Strip		✗	
Sill		✗	
Glass	✗		

PHOTOS:



Photo 1 : Existing non-impact-rated window frame

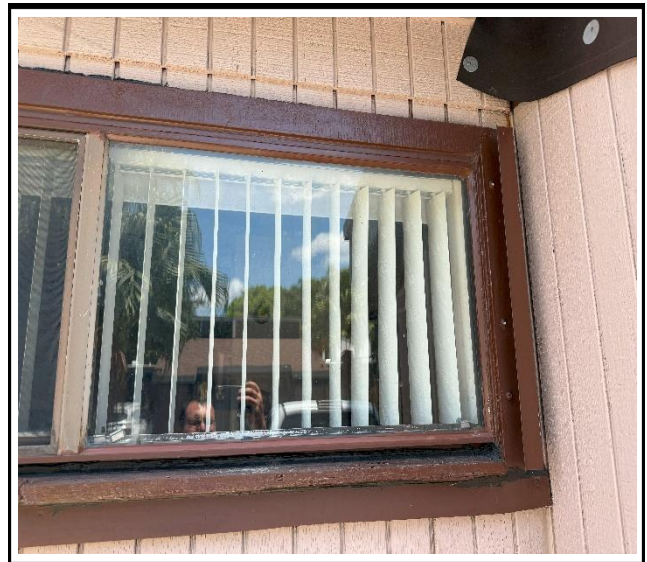


Photo 2 : Existing non-impact-rated window frame

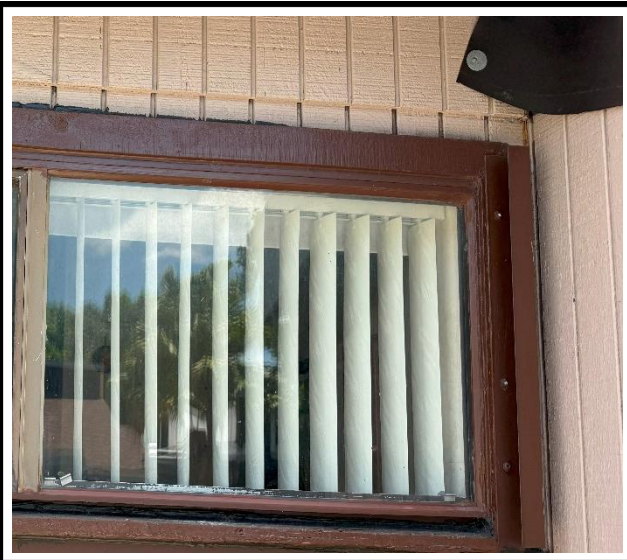


Photo 3 : Existing non-impact-rated window frame



Photo 4 : Existing non-impact-rated window frame

Omega Villas Condominium

Phase No.: 01

Building No.: 02

Unit No.: 1729

Date: 06/20/2025

General Comments:

☐ Pass

☒ Fail

The windows are approximately 40 years old and show typical signs of aging, including potential air and water leakage, degraded seals, reduced energy efficiency, and possible corrosion and/or frame deterioration.

Window Inspection

Component Decision	Good	Bad	Unknown
Window Frame		✗	
Latch			✗
Weather Strip		✗	
Sill		✗	
Glass	✗		

PHOTOS:



Photo 1 : Existing non-impact-rated window frame



Photo 2 : Existing non-impact-rated window frame



Photo 3 : Existing non-impact-rated window frame



Photo 4 : Existing non-impact-rated window frame

Omega Villas Condominium

Phase No.: 01

Building No.: 02

Unit No.: 1725

Date: 06/20/2025

General Comments:

☒ Pass

☐ Fail

New impact-resistant windows have been installed.

Window Inspection

Component Decision	Good	Bad	Unknown
Window Frame	✖		
Latch			✖
Weather Strip	✖		
Sill	✖		
Glass	✖		

PHOTOS:

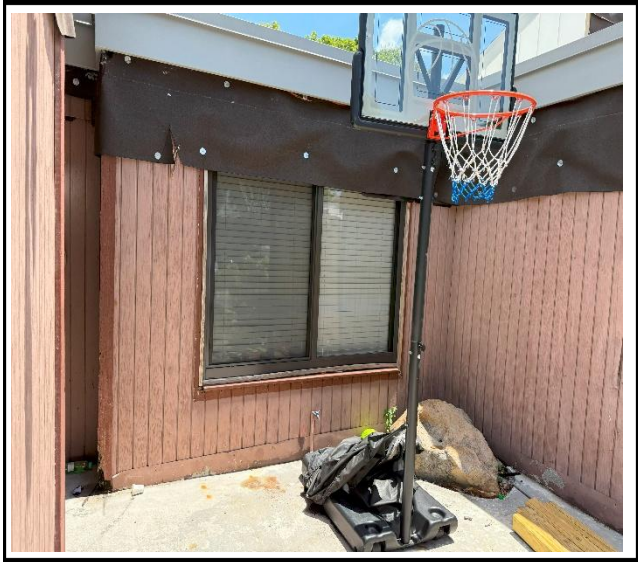


Photo 1: Existing Window



Photo 2: Existing Window

Omega Villas Condominium

Phase No.: 01

Building No.: 02

Unit No.: 1721

Date: 06/20/2025

General Comments:

☐ Pass

☒ Fail

The windows are approximately 40 years old and show typical signs of aging, including potential air and water leakage, degraded seals, reduced energy efficiency, and possible corrosion and/or frame deterioration.

Window Inspection

Component Decision	Good	Bad	Unknown
Window Frame		✗	
Latch			✗
Weather Strip		✗	
Sill		✗	
Glass	✗		

PHOTOS:



Photo 1 : Existing non-impact-rated window frame



Photo 2 : Existing non-impact-rated window frame



Photo 3 : Existing non-impact-rated window frame



Photo 4 : Existing non-impact-rated window frame

BLDG #3

Omega Villas Condominium

Phase No.: 01

Building No.: 03

Unit No.: 1741

Date: 06/20/2025

General Comments:

☐ Pass

☒ Fail

The windows are approximately 40 years old and show typical signs of aging, including potential air and water leakage, degraded seals, reduced energy efficiency, and possible corrosion and/or frame deterioration.

Window Inspection

Component Decision	Good	Bad	Unknown
Window Frame		✗	
Latch			✗
Weather Strip		✗	
Sill		✗	
Glass	✗		

PHOTOS:



Photo 1 : Existing non-impact-rated window frame



Photo 2 : Existing non-impact-rated window frame



Photo 3 : Existing non-impact-rated window frame



Photo 4 : Existing non-impact-rated window frame

Omega Villas Condominium

Phase No.: 01

Building No.: 03

Unit No.: 1745

Date: 06/20/2025

General Comments:

☐ Pass

☒ Fail

The windows are approximately 40 years old and show typical signs of aging, including potential air and water leakage, degraded seals, reduced energy efficiency, and possible corrosion and/or frame deterioration.

Window Inspection

Component Decision	Good	Bad	Unknown
Window Frame		✗	
Latch			✗
Weather Strip		✗	
Sill		✗	
Glass	✗		

PHOTOS:



Photo 1 : Existing non-impact-rated window frame



Photo 2 : Existing non-impact-rated window frame

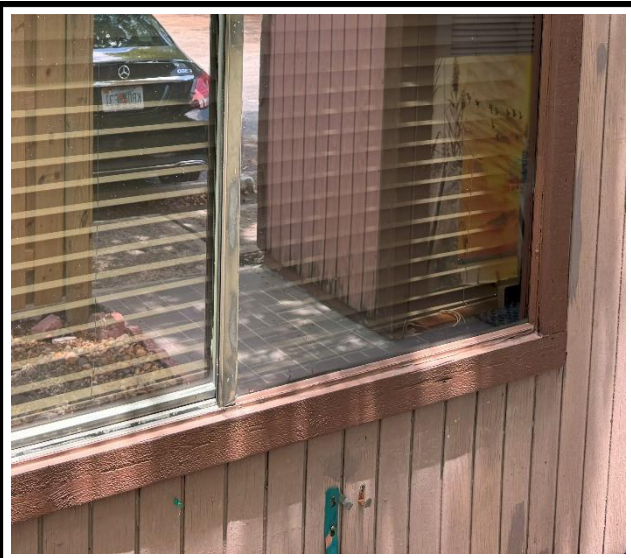


Photo 3 : Existing non-impact-rated window frame



Photo 4 : Existing non-impact-rated window frame

Omega Villas Condominium

Phase No.: 01

Building No.: 03

Unit No.: 1749

Date: 06/20/2025

General Comments:

☐ Pass

☒ Fail

The windows are approximately 40 years old and show typical signs of aging, including potential air and water leakage, degraded seals, reduced energy efficiency, and possible corrosion and/or frame deterioration.

Window Inspection

Component Decision	Good	Bad	Unknown
Window Frame		✗	
Latch			✗
Weather Strip		✗	
Sill		✗	
Glass	✗		

PHOTOS:



Photo 1 : Existing non-impact-rated window frame



Photo 2 : Existing non-impact-rated window frame

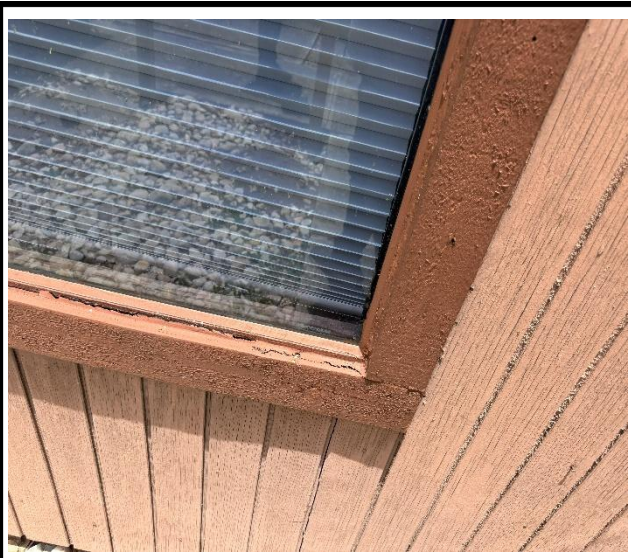


Photo 3 : Existing non-impact-rated window frame



Photo 4 : Existing non-impact-rated window frame

Omega Villas Condominium

Phase No.: 01

Building No.: 03

Unit No.: 1753

Date: 06/20/2025

General Comments:

☐ Pass

☒ Fail

The windows are approximately 40 years old and show typical signs of aging, including potential air and water leakage, degraded seals, reduced energy efficiency, and possible corrosion and/or frame deterioration.

Window Inspection

Component Decision	Good	Bad	Unknown
Window Frame		✗	
Latch			✗
Weather Strip		✗	
Sill		✗	
Glass	✗		

PHOTOS:

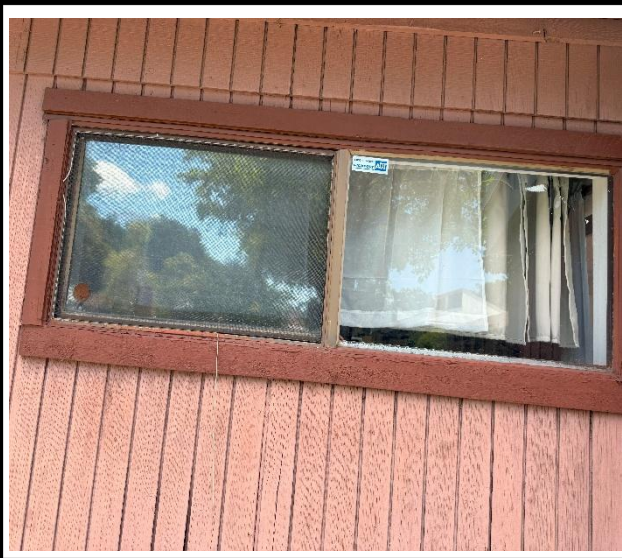


Photo 1 : Existing non-impact-rated window frame



Photo 2 : Existing non-impact-rated window frame



Photo 3 : Existing non-impact-rated window frame



Photo 4 : Existing non-impact-rated window frame

Omega Villas Condominium

Phase No.: 01

Building No.: 03

Unit No.: 1757

Date: 06/20/2025

General Comments:

☐ Pass

☒ Fail

The windows are approximately 40 years old and show typical signs of aging, including potential air and water leakage, degraded seals, reduced energy efficiency, and possible corrosion and/or frame deterioration.

Window Inspection

Component Decision	Good	Bad	Unknown
Window Frame		✗	
Latch			✗
Weather Strip		✗	
Sill		✗	
Glass	✗		

PHOTOS:



Photo 1 : Existing non-impact-rated window frame



Photo 2 : Existing non-impact-rated window frame



Photo 3 : Existing non-impact-rated window frame



Photo 4 : Existing non-impact-rated window frame

Omega Villas Condominium

Phase No.: 01

Building No.: 03

Unit No.: 1761

Date: 06/20/2025

General Comments:

☐ Pass

☒ Fail

The windows are approximately 40 years old and show typical signs of aging, including potential air and water leakage, degraded seals, reduced energy efficiency, and possible corrosion and/or frame deterioration.

Window Inspection

Component Decision	Good	Bad	Unknown
Window Frame		✗	
Latch			✗
Weather Strip		✗	
Sill		✗	
Glass	✗		

PHOTOS:



Photo 1 : Existing non-impact-rated window frame



Photo 2 : Existing non-impact-rated window frame

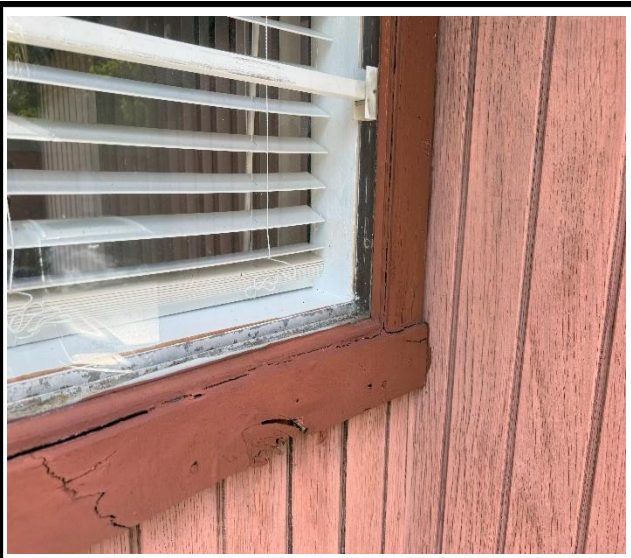


Photo 3 : Existing non-impact-rated window frame



Photo 4 : Existing non-impact-rated window frame

BLDG #4

Omega Villas Condominium

Phase No.: 01

Building No.: 04

Unit No.: 1756

Date: 06/20/2025

General Comments:

☐ Pass

☒ Fail

The windows are approximately 40 years old and show typical signs of aging, including potential air and water leakage, degraded seals, reduced energy efficiency, and possible corrosion and/or frame deterioration.

Window Inspection

Component Decision	Good	Bad	Unknown
Window Frame		✗	
Latch			✗
Weather Strip		✗	
Sill		✗	
Glass	✗		

PHOTOS:



Photo 1 : Existing non-impact-rated window frame



Photo 2 : Existing non-impact-rated window frame



Photo 3 : Existing non-impact-rated window frame



Photo 4 : Existing non-impact-rated window frame

Omega Villas Condominium

Phase No.: 01

Building No.: 04

Unit No.: 1752

Date: 06/20/2025

General Comments:

☐ Pass

☒ Fail

The windows are approximately 40 years old and show typical signs of aging, including potential air and water leakage, degraded seals, reduced energy efficiency, and possible corrosion and/or frame deterioration.

Window Inspection

Component Decision	Good	Bad	Unknown
Window Frame		✗	
Latch			✗
Weather Strip		✗	
Sill		✗	
Glass	✗		

PHOTOS:

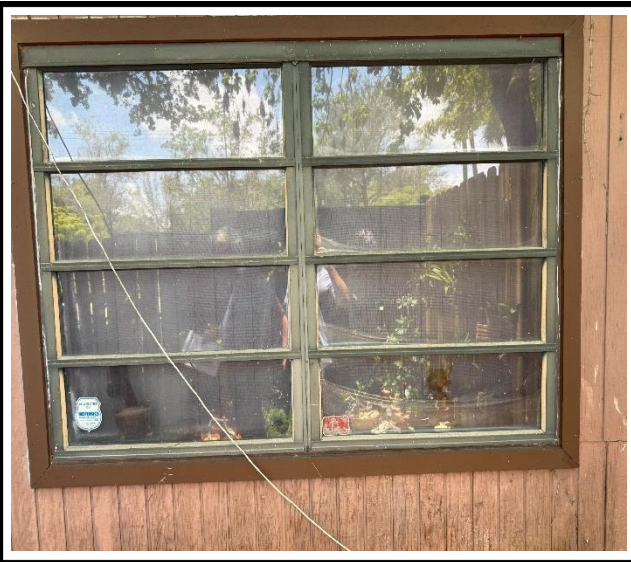


Photo 1 : Existing non-impact-rated window frame



Photo 2 : Existing non-impact-rated window frame



Photo 3 : Existing non-impact-rated window frame

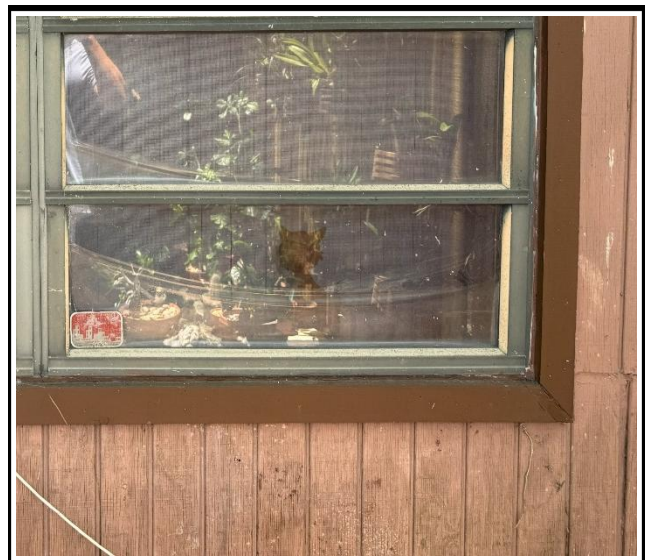


Photo 4 : Existing non-impact-rated window frame

Omega Villas Condominium

Phase No.: 01

Building No.: 04

Unit No.: 1748

Date: 06/20/2025

General Comments:

☐ Pass

☒ Fail

The windows are approximately 40 years old and show typical signs of aging, including potential air and water leakage, degraded seals, reduced energy efficiency, and possible corrosion and/or frame deterioration.

Window Inspection

Component Decision	Good	Bad	Unknown
Window Frame		✗	
Latch			✗
Weather Strip		✗	
Sill		✗	
Glass	✗		

PHOTOS:



Photo 1 : Existing non-impact-rated window frame

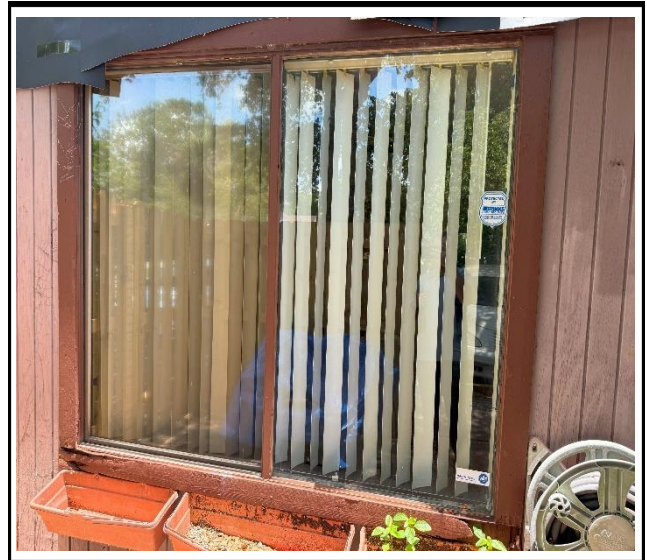


Photo 2 : Existing non-impact-rated window frame



Photo 3 : Existing non-impact-rated window frame



Photo 4 : Existing non-impact-rated window frame

Omega Villas Condominium

Phase No.: 01

Building No.: 04

Unit No.: 1744

Date: 06/20/2025

General Comments:

☐ Pass

☒ Fail

The windows are approximately 40 years old and show typical signs of aging, including potential air and water leakage, degraded seals, reduced energy efficiency, and possible corrosion and/or frame deterioration.

Window Inspection

Component Decision	Good	Bad	Unknown
Window Frame		✗	
Latch			✗
Weather Strip		✗	
Sill		✗	
Glass	✗		

PHOTOS:



Photo 1 : Existing non-impact-rated window frame



Photo 2 : Existing non-impact-rated window frame

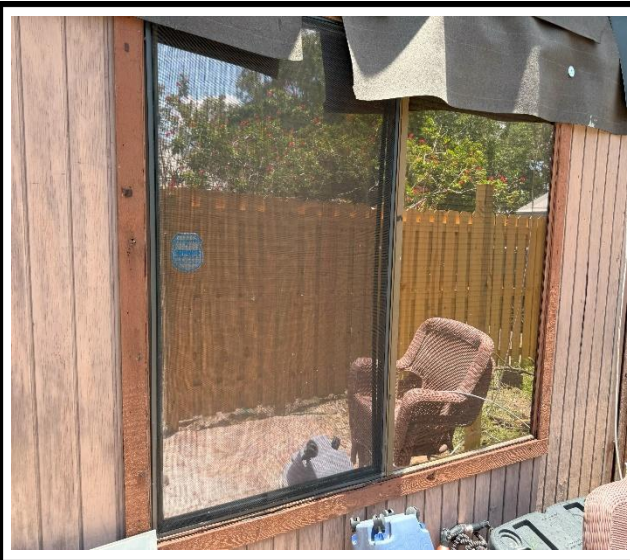


Photo 3 : Existing non-impact-rated window frame



Photo 4 : Existing non-impact-rated window frame

Omega Villas Condominium

Phase No.: 01

Building No.: 04

Unit No.: 1740

Date: 06/20/2025

General Comments:

☐ Pass

☒ Fail

The windows are approximately 40 years old and show typical signs of aging, including potential air and water leakage, degraded seals, reduced energy efficiency, and possible corrosion and/or frame deterioration.

Window Inspection

Component Decision	Good	Bad	Unknown
Window Frame		✗	
Latch			✗
Weather Strip		✗	
Sill		✗	
Glass	✗		

PHOTOS:



Photo 1 : Existing non-impact-rated window frame



Photo 2 : Existing non-impact-rated window frame



Photo 3 : Existing non-impact-rated window frame



Photo 4 : Existing non-impact-rated window frame

BLDG #5

Omega Villas Condominium

Phase No.: 01

Building No.: 05

Unit No.: 1736

Date: 06/20/2025

General Comments:

☐ Pass

☒ Fail

The windows are approximately 40 years old and show typical signs of aging, including potential air and water leakage, degraded seals, reduced energy efficiency, and possible corrosion and/or frame deterioration.

Window Inspection

Component Decision	Good	Bad	Unknown
Window Frame		✗	
Latch			✗
Weather Strip		✗	
Sill		✗	
Glass	✗		

PHOTOS:



Photo 1 : Existing non-impact-rated window frame



Photo 2 : Existing non-impact-rated window frame



Photo 3 : Existing non-impact-rated window frame



Photo 4 : Existing non-impact-rated window frame

Omega Villas Condominium

Phase No.: 01

Building No.: 05

Unit No.: 1732

Date: 06/20/2025

General Comments:

☐ Pass

☒ Fail

The windows are approximately 40 years old and show typical signs of aging, including potential air and water leakage, degraded seals, reduced energy efficiency, and possible corrosion and/or frame deterioration.

Window Inspection

Component Decision	Good	Bad	Unknown
Window Frame		✗	
Latch			✗
Weather Strip		✗	
Sill		✗	
Glass	✗		

PHOTOS:



Photo 1 : Existing non-impact-rated window frame



Photo 2 : Existing non-impact-rated window frame



Photo 3 : Existing non-impact-rated window frame

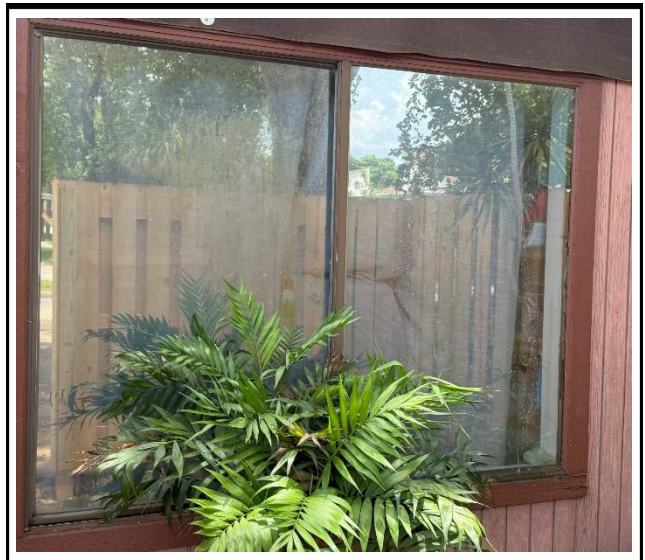


Photo 4 : Existing non-impact-rated window frame

Omega Villas Condominium

Phase No.: 01

Building No.: 05

Unit No.: 1728

Date: 06/20/2025

General Comments:

☐ Pass

☒ Fail

The windows are approximately 40 years old and show typical signs of aging, including potential air and water leakage, degraded seals, reduced energy efficiency, and possible corrosion and/or frame deterioration.

Window Inspection

Component Decision	Good	Bad	Unknown
Window Frame		✗	
Latch			✗
Weather Strip		✗	
Sill		✗	
Glass	✗		

PHOTOS:



Photo 1 : Existing non-impact-rated window frame



Photo 2 : Existing non-impact-rated window frame



Photo 3 : Existing non-impact-rated window frame



Photo 4 : Existing non-impact-rated window frame

Omega Villas Condominium

Phase No.: 01

Building No.: 05

Unit No.: 1724

Date: 06/20/2025

General Comments:

☐ Pass

☒ Fail

The windows are approximately 40 years old and show typical signs of aging, including potential air and water leakage, degraded seals, reduced energy efficiency, and possible corrosion and/or frame deterioration.

Window Inspection

Component Decision	Good	Bad	Unknown
Window Frame		✗	
Latch			✗
Weather Strip		✗	
Sill		✗	
Glass	✗		

PHOTOS:



Photo 1 : Existing non-impact-rated window frame



Photo 2 : Existing non-impact-rated window frame

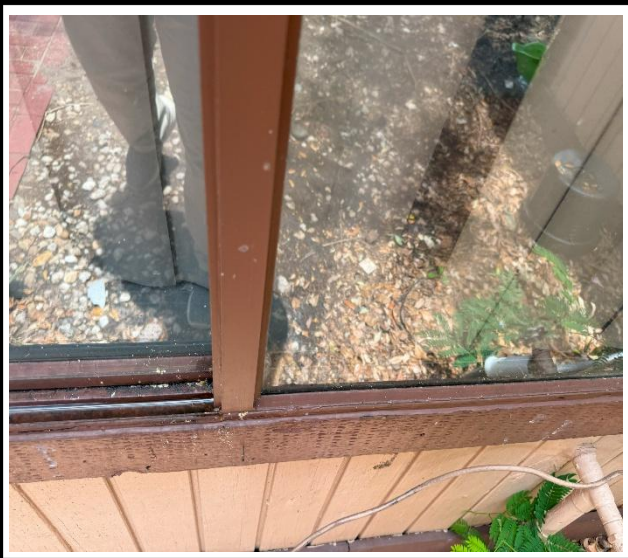


Photo 3 : Existing non-impact-rated window frame

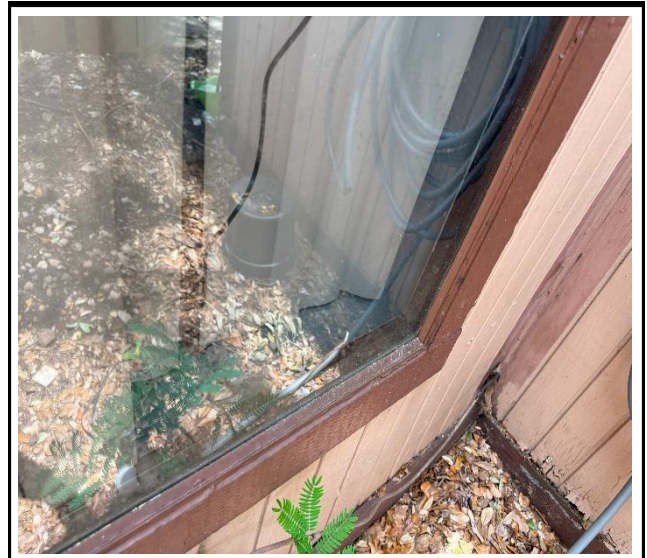


Photo 4 : Existing non-impact-rated window frame

Omega Villas Condominium

Phase No.: 01

Building No.: 05

Unit No.: 1720

Date: 06/20/2025

General Comments:

☐ Pass

☒ Fail

The windows are approximately 40 years old and show typical signs of aging, including potential air and water leakage, degraded seals, reduced energy efficiency, and possible corrosion and/or frame deterioration.

Window Inspection

Component Decision	Good	Bad	Unknown
Window Frame		✗	
Latch			✗
Weather Strip		✗	
Sill		✗	
Glass	✗		

PHOTOS:



Photo 1 : Existing non-impact-rated window frame



Photo 2 : Existing non-impact-rated window frame



Photo 3 : Existing non-impact-rated window frame



Photo 4 : Existing non-impact-rated window frame

Omega Villas Condominium

Phase No.: 01

Building No.: 05

Unit No.: 1716

Date: 06/20/2025

General Comments:

☐ Pass

☒ Fail

The windows are approximately 40 years old and show typical signs of aging, including potential air and water leakage, degraded seals, reduced energy efficiency, and possible corrosion and/or frame deterioration.

Window Inspection

Component Decision	Good	Bad	Unknown
Window Frame		✗	
Latch			✗
Weather Strip		✗	
Sill		✗	
Glass	✗		

PHOTOS:



Photo 1 : Existing non-impact-rated window frame



Photo 2 : Existing non-impact-rated window frame



Photo 3 : Existing non-impact-rated window frame



Photo 4 : Existing non-impact-rated window frame

BLDG #6

Omega Villas Condominium

Phase No.: 01

Building No.: 06

Unit No.: 1712

Date: 06/20/2025

General Comments:

☐ Pass

☒ Fail

The windows are approximately 40 years old and show typical signs of aging, including potential air and water leakage, degraded seals, reduced energy efficiency, and possible corrosion and/or frame deterioration.

Window Inspection

Component Decision	Good	Bad	Unknown
Window Frame		✗	
Latch			✗
Weather Strip		✗	
Sill		✗	
Glass	✗		

PHOTOS:



Photo 1 : Existing non-impact-rated window frame



Photo 2 : Existing non-impact-rated window frame



Photo 3 : Existing non-impact-rated window frame



Photo 4 : Existing non-impact-rated window frame

Omega Villas Condominium

Phase No.: 01

Building No.: 06

Unit No.: 1708

Date: 06/20/2025

General Comments:

☐ Pass

☒ Fail

The windows are approximately 40 years old and show typical signs of aging, including potential air and water leakage, degraded seals, reduced energy efficiency, and possible corrosion and/or frame deterioration.

Window Inspection

Component Decision	Good	Bad	Unknown
Window Frame		✗	
Latch			✗
Weather Strip		✗	
Sill		✗	
Glass	✗		

PHOTOS:



Photo 1 : Existing non-impact-rated window frame



Photo 2 : Existing non-impact-rated window frame



Photo 3 : Existing non-impact-rated window frame



Photo 4 : Existing non-impact-rated window frame

Omega Villas Condominium

Phase No.: 01

Building No.: 06

Unit No.: 1704

Date: 06/20/2025

General Comments:

☐ Pass

☒ Fail

The windows are approximately 40 years old and show typical signs of aging, including potential air and water leakage, degraded seals, reduced energy efficiency, and possible corrosion and/or frame deterioration.

Window Inspection

Component Decision	Good	Bad	Unknown
Window Frame		✗	
Latch			✗
Weather Strip		✗	
Sill		✗	
Glass	✗		

PHOTOS:



Photo 1 : Existing non-impact-rated window frame



Photo 2 : Existing non-impact-rated window frame

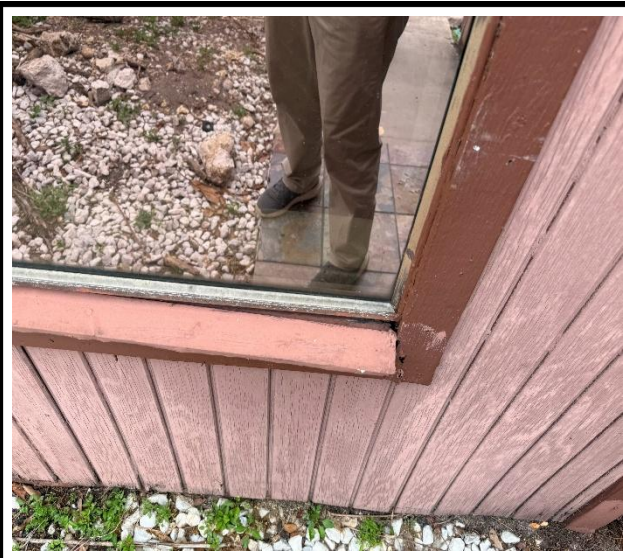


Photo 3 : Existing non-impact-rated window frame



Photo 4 : Existing non-impact-rated window frame

Omega Villas Condominium

Phase No.: 01

Building No.: 06

Unit No.: 1700

Date: 06/20/2025

General Comments:

☐ Pass

☒ Fail

The windows are approximately 40 years old and show typical signs of aging, including potential air and water leakage, degraded seals, reduced energy efficiency, and possible corrosion and/or frame deterioration.

Window Inspection

Component Decision	Good	Bad	Unknown
Window Frame		✗	
Latch			✗
Weather Strip		✗	
Sill		✗	
Glass	✗		

PHOTOS:



Photo 1 : Existing non-impact-rated window frame



Photo 2 : Existing non-impact-rated window frame

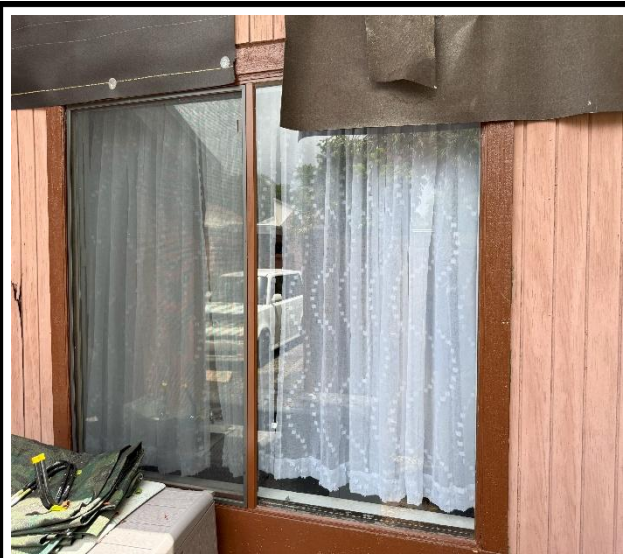


Photo 3 : Existing non-impact-rated window frame



Photo 4 : Existing non-impact-rated window frame

BLDG #7

Omega Villas Condominium

Phase No.: 02

Building No.: 07

Unit No.: 1701

Date: 06/20/2025

General Comments:

☐ Pass

☒ Fail

The windows are approximately 40 years old and show typical signs of aging, including potential air and water leakage, degraded seals, reduced energy efficiency, and possible corrosion and/or frame deterioration.

Window Inspection

Component Decision	Good	Bad	Unknown
Window Frame		✗	
Latch			✗
Weather Strip		✗	
Sill		✗	
Glass	✗		

PHOTOS:



Photo 1 : Existing non-impact-rated window frame



Photo 2 : Existing non-impact-rated window frame



Photo 3 : Existing non-impact-rated window frame



Photo 4 : Existing non-impact-rated window frame

Omega Villas Condominium

Phase No.: 02

Building No.: 07

Unit No.: 1705

Date: 06/20/2025

General Comments:

☐ Pass

☒ Fail

The windows are approximately 40 years old and show typical signs of aging, including potential air and water leakage, degraded seals, reduced energy efficiency, and possible corrosion and/or frame deterioration.

Window Inspection

Component Decision	Good	Bad	Unknown
Window Frame		✗	
Latch			✗
Weather Strip		✗	
Sill		✗	
Glass	✗		

PHOTOS:



Photo 1 : Existing non-impact-rated window frame



Photo 2 : Existing non-impact-rated window frame



Photo 3 : Existing non-impact-rated window frame



Photo 4 : Existing non-impact-rated window frame

Omega Villas Condominium

Phase No.: 02

Building No.: 07

Unit No.: 1709

Date: 06/20/2025

General Comments:

☐ Pass

☒ Fail

The windows are approximately 40 years old and show typical signs of aging, including potential air and water leakage, degraded seals, reduced energy efficiency, and possible corrosion and/or frame deterioration.

Window Inspection

Component Decision	Good	Bad	Unknown
Window Frame		✗	
Latch			✗
Weather Strip		✗	
Sill		✗	
Glass	✗		

PHOTOS:



Photo 1 : Existing non-impact-rated window frame



Photo 2 : Existing non-impact-rated window frame

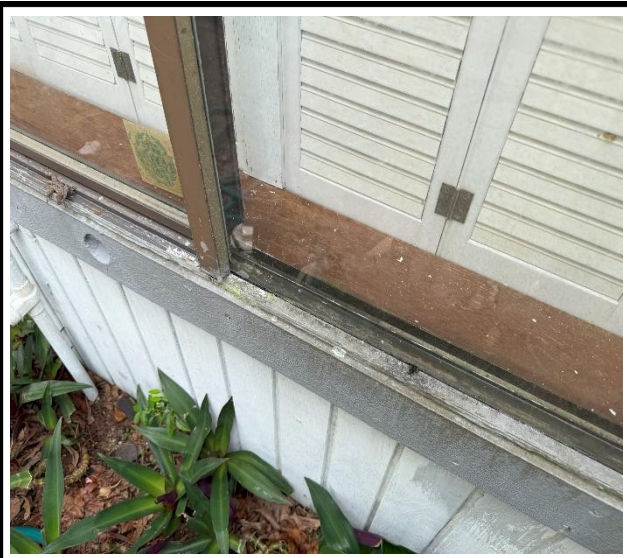


Photo 3 : Existing non-impact-rated window frame



Photo 4 : Existing non-impact-rated window frame

Omega Villas Condominium

Phase No.: 02

Building No.: 07

Unit No.: 1713

Date: 06/20/2025

General Comments:

☐ Pass

☒ Fail

The windows are approximately 40 years old and show typical signs of aging, including potential air and water leakage, degraded seals, reduced energy efficiency, and possible corrosion and/or frame deterioration.

Window Inspection

Component Decision	Good	Bad	Unknown
Window Frame		✗	
Latch			✗
Weather Strip		✗	
Sill		✗	
Glass	✗		

PHOTOS:



Photo 1 : Existing non-impact-rated window frame



Photo 2 : Existing non-impact-rated window frame



Photo 3 : Existing non-impact-rated window frame



Photo 4 : Existing non-impact-rated window frame

Omega Villas Condominium

Phase No.: 02

Building No.: 07

Unit No.: 1717

Date: 06/20/2025

General Comments:

☒ Pass

☐ Fail

New impact-resistant windows have been installed.

Window Inspection

Component Decision	Good	Bad	Unknown
Window Frame	✘		
Latch			✘
Weather Strip	✘		
Sill	✘		
Glass	✘		

PHOTOS:



Photo 1 : Existing Window



Photo 2 : Existing Window

Omega Villas Condominium

Phase No.: 02

Building No.: 07

Unit No.: 1721

Date: 06/20/2025

General Comments:

☐ Pass

☒ Fail

The windows are approximately 40 years old and show typical signs of aging, including potential air and water leakage, degraded seals, reduced energy efficiency, and possible corrosion and/or frame deterioration.

Window Inspection

Component Decision	Good	Bad	Unknown
Window Frame		✗	
Latch			✗
Weather Strip		✗	
Sill		✗	
Glass	✗		

PHOTOS:



Photo 1 : Existing non-impact-rated window frame



Photo 2 : Existing non-impact-rated window frame



Photo 3 : Existing non-impact-rated window frame



Photo 4 : Existing non-impact-rated window frame

BLDG #8

Omega Villas Condominium

Phase No.: 02

Building No.: 08

Unit No.: 1725

Date: 06/20/2025

General Comments:

☐ Pass

☒ Fail

The windows are approximately 40 years old and show typical signs of aging, including potential air and water leakage, degraded seals, reduced energy efficiency, and possible corrosion and/or frame deterioration.

Window Inspection

Component Decision	Good	Bad	Unknown
Window Frame		✗	
Latch			✗
Weather Strip		✗	
Sill		✗	
Glass	✗		

PHOTOS:



Photo 1 : Existing non-impact-rated window frame



Photo 2 : Existing non-impact-rated window frame



Photo 3 : Existing non-impact-rated window frame



Photo 4 : Existing non-impact-rated window frame

Omega Villas Condominium

Phase No.: 02

Building No.: 08

Unit No.: 1729

Date: 06/20/2025

General Comments:

☒ Pass

☐ Fail

New impact-resistant windows have been installed.

Window Inspection

Component Decision	Good	Bad	Unknown
Window Frame	✘		
Latch			✘
Weather Strip	✘		
Sill	✘		
Glass	✘		

PHOTOS:



Photo 1 : Existing Window



Photo 2 : Existing Window

Omega Villas Condominium

Phase No.: 02

Building No.: 08

Unit No.: 1733

Date: 06/20/2025

General Comments:

☐ Pass

☒ Fail

The windows are approximately 40 years old and show typical signs of aging, including potential air and water leakage, degraded seals, reduced energy efficiency, and possible corrosion and/or frame deterioration.

Window Inspection

Component Decision	Good	Bad	Unknown
Window Frame		✗	
Latch			✗
Weather Strip		✗	
Sill		✗	
Glass		✗	

PHOTOS:



Photo 1 : Existing non-impact-rated window frame



Photo 2 : Existing non-impact-rated window frame



Photo 3 : Existing non-impact-rated window frame



Photo 4 : Existing non-impact-rated window frame

Omega Villas Condominium

Phase No.: 02

Building No.: 08

Unit No.: 1737

Date: 06/20/2025

General Comments:

☐ Pass

☒ Fail

The windows are approximately 40 years old and show typical signs of aging, including potential air and water leakage, degraded seals, reduced energy efficiency, and possible corrosion and/or frame deterioration.

Window Inspection

Component Decision	Good	Bad	Unknown
Window Frame		✗	
Latch			✗
Weather Strip		✗	
Sill		✗	
Glass	✗		

PHOTOS:



Photo 1 : Existing non-impact-rated window frame



Photo 2 : Existing non-impact-rated window frame



Photo 3 : Existing non-impact-rated window frame



Photo 4 : Existing non-impact-rated window frame

Omega Villas Condominium

Phase No.: 02

Building No.: 08

Unit No.: 1741

Date: 06/20/2025

General Comments:

☐ Pass

☒ Fail

The windows are approximately 40 years old and show typical signs of aging, including potential air and water leakage, degraded seals, reduced energy efficiency, and possible corrosion and/or frame deterioration.

Window Inspection

Component Decision	Good	Bad	Unknown
Window Frame		✗	
Latch			✗
Weather Strip		✗	
Sill		✗	
Glass	✗		

PHOTOS:



Photo 1 : Existing non-impact-rated window frame



Photo 2 : Existing non-impact-rated window frame



Photo 3 : Existing non-impact-rated window frame



Photo 4 : Existing non-impact-rated window frame

BLDG #9

Omega Villas Condominium

Phase No.: 02

Building No.: 09

Unit No.: 1761

Date: 06/20/2025

General Comments:

☐ Pass

☒ Fail

The windows are approximately 40 years old and show typical signs of aging, including potential air and water leakage, degraded seals, reduced energy efficiency, and possible corrosion and/or frame deterioration.

Window Inspection

Component Decision	Good	Bad	Unknown
Window Frame		✗	
Latch			✗
Weather Strip		✗	
Sill		✗	
Glass	✗		

PHOTOS:



Photo 1 : Existing non-impact-rated window frame



Photo 2 : Existing non-impact-rated window frame



Photo 3 : Existing non-impact-rated window frame



Photo 4 : Existing non-impact-rated window frame

Omega Villas Condominium

Phase No.: 02

Building No.: 09

Unit No.: 1757

Date: 06/20/2025

General Comments:

☐ Pass

☒ Fail

The windows are approximately 40 years old and show typical signs of aging, including potential air and water leakage, degraded seals, reduced energy efficiency, and possible corrosion and/or frame deterioration.

Window Inspection

Component Decision	Good	Bad	Unknown
Window Frame		✗	
Latch			✗
Weather Strip		✗	
Sill		✗	
Glass	✗		

PHOTOS:



Photo 1 : Existing non-impact-rated window frame



Photo 2 : Existing non-impact-rated window frame



Photo 3 : Existing non-impact-rated window frame



Photo 4 : Existing non-impact-rated window frame

Omega Villas Condominium

Phase No.: 02

Building No.: 09

Unit No.: 1753

Date: 06/20/2025

General Comments:

☐ Pass

☒ Fail

The windows are approximately 40 years old and show typical signs of aging, including potential air and water leakage, degraded seals, reduced energy efficiency, and possible corrosion and/or frame deterioration.

Window Inspection

Component Decision	Good	Bad	Unknown
Window Frame		✗	
Latch			✗
Weather Strip		✗	
Sill		✗	
Glass	✗		

PHOTOS:



Photo 1 : Existing non-impact-rated window frame



Photo 2 : Existing non-impact-rated window frame



Photo 3 : Existing non-impact-rated window frame



Photo 4 : Existing non-impact-rated window frame

Omega Villas Condominium

Phase No.: 02

Building No.: 09

Unit No.: 1749

Date: 06/20/2025

General Comments:

☐ Pass

☒ Fail

The windows are approximately 40 years old and show typical signs of aging, including potential air and water leakage, degraded seals, reduced energy efficiency, and possible corrosion and/or frame deterioration.

Window Inspection

Component Decision	Good	Bad	Unknown
Window Frame		✗	
Latch			✗
Weather Strip		✗	
Sill		✗	
Glass	✗		

PHOTOS:



Photo 1 : Existing non-impact-rated window frame



Photo 2 : Existing non-impact-rated window frame



Photo 3 : Existing non-impact-rated window frame



Photo 4 : Existing non-impact-rated window frame

Omega Villas Condominium

Phase No.: 02

Building No.: 09

Unit No.: 1745

Date: 06/20/2025

General Comments:

☐ Pass

☒ Fail

The windows are approximately 40 years old and show typical signs of aging, including potential air and water leakage, degraded seals, reduced energy efficiency, and possible corrosion and/or frame deterioration.

Window Inspection

Component Decision	Good	Bad	Unknown
Window Frame		✗	
Latch			✗
Weather Strip		✗	
Sill		✗	
Glass	✗		

PHOTOS:



Photo 1 : Existing non-impact-rated window frame



Photo 2 : Existing non-impact-rated window frame



Photo 3 : Existing non-impact-rated window frame



Photo 4 : Existing non-impact-rated window frame

BLDG #10

Omega Villas Condominium

Phase No.: 02

Building No.: 10

Unit No.: 1760

Date: 06/20/2025

General Comments:

☐ Pass

☐ Fail

NO Access Provided

Window Inspection

Component Decision	Good	Bad	Unknown
Window Frame			✖
Latch			✖
Weather Strip			✖
Sill			✖
Glass			✖

PHOTOS:



Omega Villas Condominium

Phase No.: 02

Building No.: 10

Unit No.: 1756

Date: 06/20/2025

General Comments:

☐ Pass

☒ Fail

The windows are approximately 40 years old and show typical signs of aging, including potential air and water leakage, degraded seals, reduced energy efficiency, and possible corrosion and/or frame deterioration.

Window Inspection

Component Decision	Good	Bad	Unknown
Window Frame		✗	
Latch			✗
Weather Strip		✗	
Sill		✗	
Glass	✗		

PHOTOS:



Photo 1 : Existing non-impact-rated window frame



Photo 2 : Existing non-impact-rated window frame



Photo 3 : Existing non-impact-rated window frame



Photo 4 : Existing non-impact-rated window frame

Omega Villas Condominium

Phase No.: 02

Building No.: 10

Unit No.: 1752

Date: 06/20/2025

General Comments:

☐ Pass

☒ Fail

The windows are approximately 40 years old and show typical signs of aging, including potential air and water leakage, degraded seals, reduced energy efficiency, and possible corrosion and/or frame deterioration.

Window Inspection

Component Decision	Good	Bad	Unknown
Window Frame		✗	
Latch			✗
Weather Strip		✗	
Sill		✗	
Glass	✗		

PHOTOS:



Photo 1 : Existing non-impact-rated window frame



Photo 2 : Existing non-impact-rated window frame



Photo 3 : Existing non-impact-rated window frame



Photo 4 : Existing non-impact-rated window frame

Omega Villas Condominium

Phase No.: 02

Building No.: 10

Unit No.: 1748

Date: 06/20/2025

General Comments:

☐ Pass

☒ Fail

The windows are approximately 40 years old and show typical signs of aging, including potential air and water leakage, degraded seals, reduced energy efficiency, and possible corrosion and/or frame deterioration.

Window Inspection

Component Decision	Good	Bad	Unknown
Window Frame		✗	
Latch			✗
Weather Strip		✗	
Sill		✗	
Glass	✗		

PHOTOS:



Photo 1 : Existing non-impact-rated window frame



Photo 2 : Existing non-impact-rated window frame



Photo 3 : Existing non-impact-rated window frame



Photo 4 : Existing non-impact-rated window frame

Omega Villas Condominium

Phase No.: 02

Building No.: 10

Unit No.: 1744

Date: 06/20/2025

General Comments:

☐ Pass

☒ Fail

The windows are approximately 40 years old and show typical signs of aging, including potential air and water leakage, degraded seals, reduced energy efficiency, and possible corrosion and/or frame deterioration.

Window Inspection

Component Decision	Good	Bad	Unknown
Window Frame		✗	
Latch			✗
Weather Strip		✗	
Sill		✗	
Glass	✗		

PHOTOS:



Photo 1 : Existing non-impact-rated window frame



Photo 2 : Existing non-impact-rated window frame



Photo 3 : Existing non-impact-rated window frame

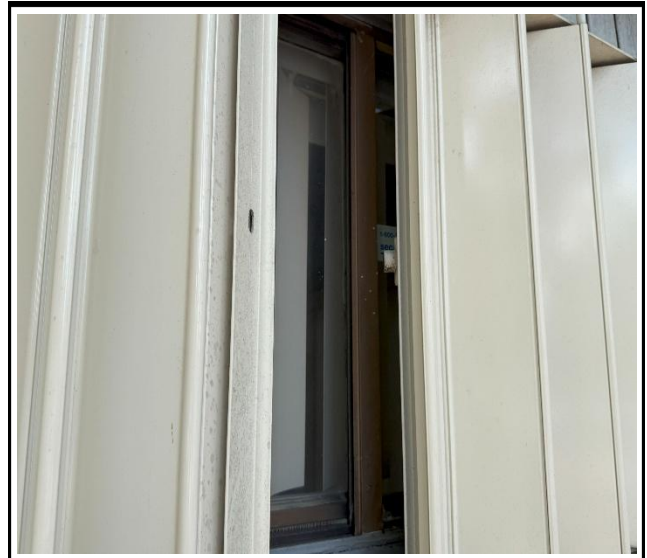


Photo 4 : Existing non-impact-rated window frame

Omega Villas Condominium

Phase No.: 02

Building No.: 10

Unit No.: 1740

Date: 06/20/2025

General Comments:

☒ Pass

☐ Fail

New impact-resistant windows have been installed.

Window Inspection

Component Decision	Good	Bad	Unknown
Window Frame	✗		
Latch			✗
Weather Strip	✗		
Sill	✗		
Glass	✗		

PHOTOS:



Photo 1 : Existing Window



Photo 2 : Existing Window

BLDG #11

Omega Villas Condominium

Phase No.: 02

Building No.: 11

Unit No.: 1712

Date: 06/20/2025

General Comments:

☐ Pass

☒ Fail

The windows are approximately 40 years old and show typical signs of aging, including potential air and water leakage, degraded seals, reduced energy efficiency, and possible corrosion and/or frame deterioration.

Window Inspection

Component Decision	Good	Bad	Unknown
Window Frame		✗	
Latch			✗
Weather Strip		✗	
Sill		✗	
Glass	✗		

PHOTOS:



Photo 1 : Existing non-impact-rated window frame

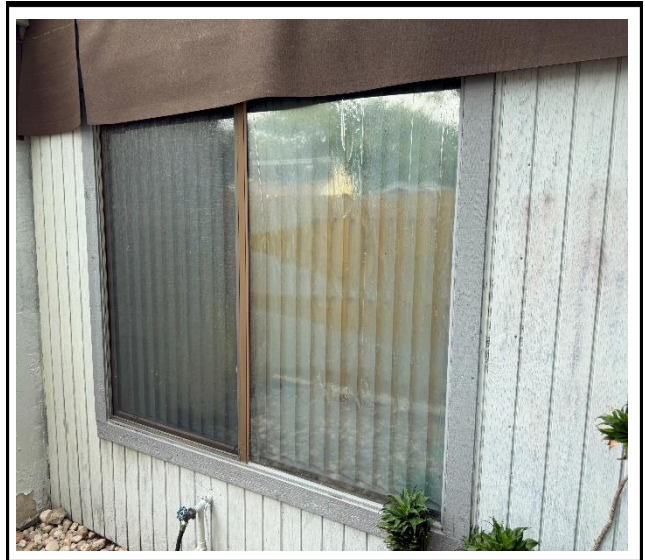


Photo 2 : Existing non-impact-rated window frame

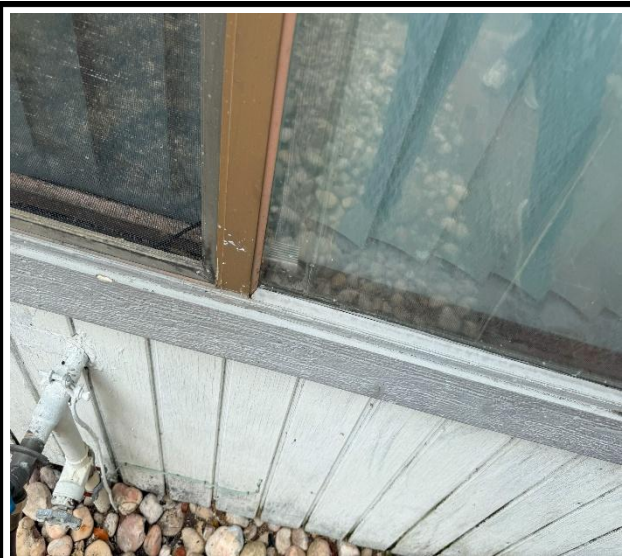


Photo 3 : Existing non-impact-rated window frame



Photo 4 : Existing non-impact-rated window frame

Omega Villas Condominium

Phase No.: 02

Building No.: 11

Unit No.: 1716

Date: 06/20/2025

General Comments:

☐ Pass

☒ Fail

The windows are approximately 40 years old and show typical signs of aging, including potential air and water leakage, degraded seals, reduced energy efficiency, and possible corrosion and/or frame deterioration.

Window Inspection

Component Decision	Good	Bad	Unknown
Window Frame		✗	
Latch			✗
Weather Strip		✗	
Sill		✗	
Glass	✗		

PHOTOS:



Photo 1 : Existing non-impact-rated window frame



Photo 2 : Existing non-impact-rated window frame



Photo 3 : Existing non-impact-rated window frame



Photo 4 : Existing non-impact-rated window frame

Omega Villas Condominium

Phase No.: 02

Building No.: 11

Unit No.: 1720

Date: 06/20/2025

General Comments:

☐ Pass

☒ Fail

The windows are approximately 40 years old and show typical signs of aging, including potential air and water leakage, degraded seals, reduced energy efficiency, and possible corrosion and/or frame deterioration.

Window Inspection

Component Decision	Good	Bad	Unknown
Window Frame		✗	
Latch			✗
Weather Strip		✗	
Sill		✗	
Glass	✗		

PHOTOS:



Photo 1 : Existing non-impact-rated window frame



Photo 2 : Existing non-impact-rated window frame



Photo 3 : Existing non-impact-rated window frame



Photo 4 : Existing non-impact-rated window frame

Omega Villas Condominium

Phase No.: 02

Building No.: 11

Unit No.: 1724

Date: 06/20/2025

General Comments:

☐ Pass

☒ Fail

The windows are approximately 40 years old and show typical signs of aging, including potential air and water leakage, degraded seals, reduced energy efficiency, and possible corrosion and/or frame deterioration.

Window Inspection

Component Decision	Good	Bad	Unknown
Window Frame		✗	
Latch			✗
Weather Strip		✗	
Sill		✗	
Glass	✗		

PHOTOS:



Photo 1 : Existing non-impact-rated window frame



Photo 2 : Existing non-impact-rated window frame



Photo 3 : Existing non-impact-rated window frame



Photo 4 : Existing non-impact-rated window frame

Omega Villas Condominium

Phase No.: 02

Building No.: 11

Unit No.: 1728

Date: 06/20/2025

General Comments:

☐ Pass

☒ Fail

The windows are approximately 40 years old and show typical signs of aging, including potential air and water leakage, degraded seals, reduced energy efficiency, and possible corrosion and/or frame deterioration.

Window Inspection

Component Decision	Good	Bad	Unknown
Window Frame		✗	
Latch			✗
Weather Strip		✗	
Sill		✗	
Glass	✗		

PHOTOS:



Photo 1 : Existing non-impact-rated window frame

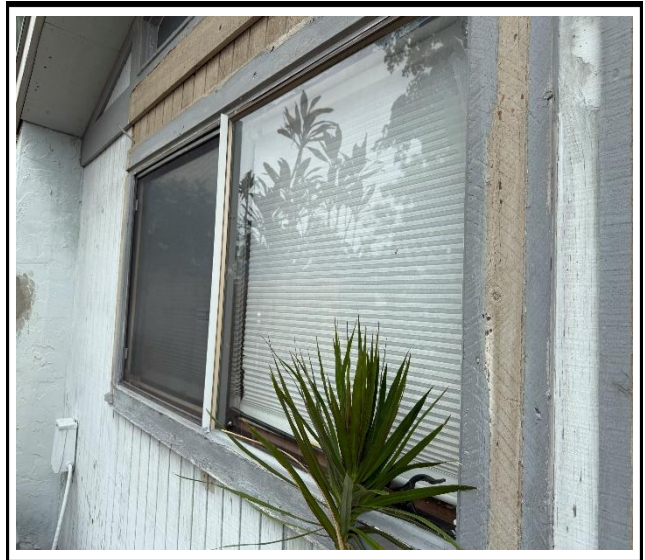


Photo 2 : Existing non-impact-rated window frame



Photo 3 : Existing non-impact-rated window frame



Photo 4 : Existing non-impact-rated window frame

Omega Villas Condominium

Phase No.: 02

Building No.: 11

Unit No.: 1732

Date: 06/20/2025

General Comments:

☒ Pass

☐ Fail

New impact-resistant windows have been installed.

Window Inspection

Component Decision	Good	Bad	Unknown
Window Frame	✘		
Latch			✘
Weather Strip	✘		
Sill	✘		
Glass	✘		

PHOTOS:



Photo 1 : Existing Window



Photo 2 : Existing Window

BLDG #12

Omega Villas Condominium

Phase No.: 02

Building No.: 12

Unit No.: 1708

Date: 06/20/2025

General Comments:

☐ Pass

☒ Fail

The windows are approximately 40 years old and show typical signs of aging, including potential air and water leakage, degraded seals, reduced energy efficiency, and possible corrosion and/or frame deterioration.

Window Inspection

Component Decision	Good	Bad	Unknown
Window Frame		✗	
Latch			✗
Weather Strip		✗	
Sill		✗	
Glass	✗		

PHOTOS:



Photo 1 : Existing non-impact-rated window frame



Photo 2 : Existing non-impact-rated window frame



Photo 3 : Existing non-impact-rated window frame



Photo 4 : Existing non-impact-rated window frame

Omega Villas Condominium

Phase No.: 02

Building No.: 12

Unit No.: 1704

Date: 06/20/2025

General Comments:

☐ Pass

☒ Fail

The windows are approximately 40 years old and show typical signs of aging, including potential air and water leakage, degraded seals, reduced energy efficiency, and possible corrosion and/or frame deterioration.

Window Inspection

Component Decision	Good	Bad	Unknown
Window Frame		✗	
Latch			✗
Weather Strip		✗	
Sill		✗	
Glass	✗		

PHOTOS:



Photo 1 : Existing non-impact-rated window frame



Photo 2 : Existing non-impact-rated window frame



Photo 3 : Existing non-impact-rated window frame



Photo 4 : Existing non-impact-rated window frame

Omega Villas Condominium

Phase No.: 02

Building No.: 12

Unit No.: 1700

Date: 06/20/2025

General Comments:

☒ Pass

☐ Fail

New impact-resistant windows have been installed.

Window Inspection

Component Decision	Good	Bad	Unknown
Window Frame	✗		
Latch			✗
Weather Strip	✗		
Sill	✗		
Glass	✗		

PHOTOS:



Photo 1 : Existing Window



Photo 2 : Existing Window

BLDG #13

Omega Villas Condominium

Phase No.: 03

Building No.: 13

Unit No.: 1709

Date: 06/20/2025

General Comments:

☐ Pass

☒ Fail

The windows are approximately 40 years old and show typical signs of aging, including potential air and water leakage, degraded seals, reduced energy efficiency, and possible corrosion and/or frame deterioration.

Window Inspection

Component Decision	Good	Bad	Unknown
Window Frame		✗	
Latch			✗
Weather Strip		✗	
Sill		✗	
Glass	✗		

PHOTOS:



Photo 1 : Existing non-impact-rated window frame



Photo 2 : Existing non-impact-rated window frame

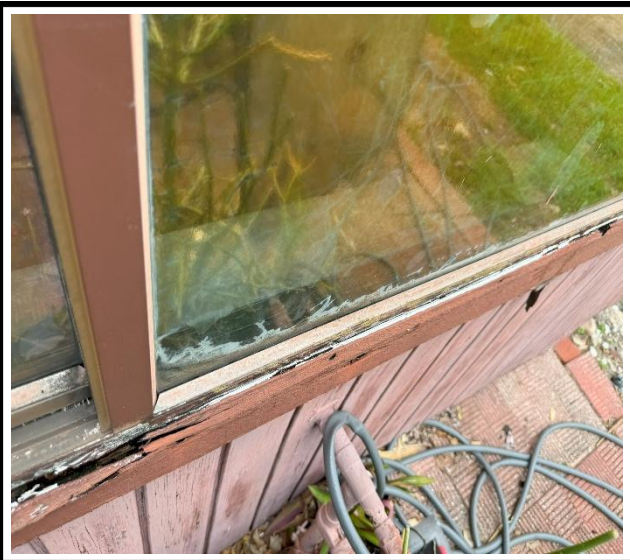


Photo 3 : Existing non-impact-rated window frame



Photo 4 : Existing non-impact-rated window frame

Omega Villas Condominium

Phase No.: 03

Building No.: 13

Unit No.: 1705

Date: 06/20/2025

General Comments:

☐ Pass

☒ Fail

The windows are approximately 40 years old and show typical signs of aging, including potential air and water leakage, degraded seals, reduced energy efficiency, and possible corrosion and/or frame deterioration.

Window Inspection

Component Decision	Good	Bad	Unknown
Window Frame		✗	
Latch			✗
Weather Strip		✗	
Sill		✗	
Glass	✗		

PHOTOS:



Photo 1 : Existing non-impact-rated window frame



Photo 2 : Existing non-impact-rated window frame



Photo 3 : Existing non-impact-rated window frame



Photo 4 : Existing non-impact-rated window frame

Omega Villas Condominium

Phase No.: 03

Building No.: 13

Unit No.: 1701

Date: 06/20/2025

General Comments:

☐ Pass

☒ Fail

The windows are approximately 40 years old and show typical signs of aging, including potential air and water leakage, degraded seals, reduced energy efficiency, and possible corrosion and/or frame deterioration.

Window Inspection

Component Decision	Good	Bad	Unknown
Window Frame		✗	
Latch			✗
Weather Strip		✗	
Sill		✗	
Glass	✗		

PHOTOS:



Photo 1 : Existing non-impact-rated window frame



Photo 2 : Existing non-impact-rated window frame



Photo 3 : Existing non-impact-rated window frame



Photo 4 : Existing non-impact-rated window frame

BLDG #14

Omega Villas Condominium

Phase No.: 03

Building No.: 14

Unit No.: 1741

Date: 06/20/2025

General Comments:

☒ Pass

☐ Fail

New impact-resistant windows have been installed.

Window Inspection

Component Decision	Good	Bad	Unknown
Window Frame	✘		
Latch			✘
Weather Strip	✘		
Sill	✘		
Glass	✘		

PHOTOS:



Photo 1 : Existing Window



Photo 2 : Existing Window

Omega Villas Condominium

Phase No.: 03

Building No.: 14

Unit No.: 1737

Date: 06/20/2025

General Comments:

☐ Pass

☒ Fail

The windows are approximately 40 years old and show typical signs of aging, including potential air and water leakage, degraded seals, reduced energy efficiency, and possible corrosion and/or frame deterioration.

Window Inspection

Component Decision	Good	Bad	Unknown
Window Frame		✗	
Latch			✗
Weather Strip		✗	
Sill		✗	
Glass	✗		

PHOTOS:



Photo 1 : Existing non-impact-rated window frame



Photo 2 : Existing non-impact-rated window frame



Photo 3 : Existing non-impact-rated window frame



Photo 4 : Existing non-impact-rated window frame

Omega Villas Condominium

Phase No.: 03

Building No.: 14

Unit No.: 1733

Date: 06/20/2025

General Comments:

☐ Pass

☒ Fail

The windows are approximately 40 years old and show typical signs of aging, including potential air and water leakage, degraded seals, reduced energy efficiency, and possible corrosion and/or frame deterioration.

Window Inspection

Component Decision	Good	Bad	Unknown
Window Frame		✗	
Latch			✗
Weather Strip		✗	
Sill		✗	
Glass	✗		

PHOTOS:



Photo 1 : Existing non-impact-rated window frame



Photo 2 : Existing non-impact-rated window frame



Photo 3 : Existing non-impact-rated window frame



Photo 4 : Existing non-impact-rated window frame

Omega Villas Condominium

Phase No.: 03

Building No.: 14

Unit No.: 1729

Date: 06/20/2025

General Comments:

☐ Pass

☒ Fail

The windows are approximately 40 years old and show typical signs of aging, including potential air and water leakage, degraded seals, reduced energy efficiency, and possible corrosion and/or frame deterioration.

Window Inspection

Component Decision	Good	Bad	Unknown
Window Frame		✗	
Latch			✗
Weather Strip		✗	
Sill		✗	
Glass	✗		

PHOTOS:



Photo 1 : Existing non-impact-rated window frame



Photo 2 : Existing non-impact-rated window frame



Photo 3 : Existing non-impact-rated window frame



Photo 4 : Existing non-impact-rated window frame

Omega Villas Condominium

Phase No.: 03

Building No.: 14

Unit No.: 1725

Date: 06/20/2025

General Comments:

☐ Pass

☒ Fail

The windows are approximately 40 years old and show typical signs of aging, including potential air and water leakage, degraded seals, reduced energy efficiency, and possible corrosion and/or frame deterioration.

Window Inspection

Component Decision	Good	Bad	Unknown
Window Frame		✗	
Latch			✗
Weather Strip		✗	
Sill		✗	
Glass	✗		

PHOTOS:



Photo 1 : Existing non-impact-rated window frame



Photo 2 : Existing non-impact-rated window frame



Photo 3 : Existing non-impact-rated window frame

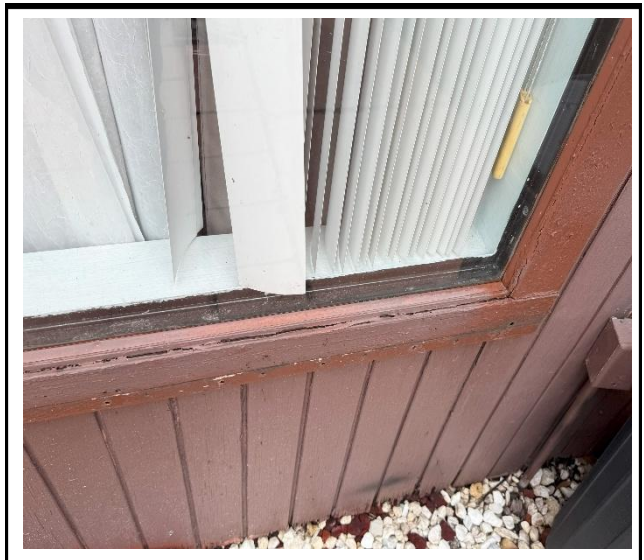


Photo 4 : Existing non-impact-rated window frame

Omega Villas Condominium

Phase No.: 03

Building No.: 14

Unit No.: 1717

Date: 06/20/2025

General Comments:

☐ Pass

☒ Fail

The windows are approximately 40 years old and show typical signs of aging, including potential air and water leakage, degraded seals, reduced energy efficiency, and possible corrosion and/or frame deterioration.

Window Inspection

Component Decision	Good	Bad	Unknown
Window Frame		✗	
Latch			✗
Weather Strip		✗	
Sill		✗	
Glass	✗		

PHOTOS:



Photo 1 : Existing non-impact-rated window frame



Photo 2 : Existing non-impact-rated window frame



Photo 3 : Existing non-impact-rated window frame



Photo 4 : Existing non-impact-rated window frame

BLDG #15

Omega Villas Condominium

Phase No.: 03

Building No.: 15

Unit No.: 1745

Date: 06/20/2025

General Comments:

☐ Pass

☒ Fail

The windows are approximately 40 years old and show typical signs of aging, including potential air and water leakage, degraded seals, reduced energy efficiency, and possible corrosion and/or frame deterioration.

Window Inspection

Component Decision	Good	Bad	Unknown
Window Frame		✗	
Latch			✗
Weather Strip		✗	
Sill		✗	
Glass	✗		

PHOTOS:



Photo 1 : Existing non-impact-rated window frame



Photo 2 : Existing non-impact-rated window frame



Photo 3 : Existing non-impact-rated window frame



Photo 4 : Existing non-impact-rated window frame

Omega Villas Condominium

Phase No.: 03

Building No.: 15

Unit No.: 1749

Date: 06/20/2025

General Comments:

☐ Pass

☒ Fail

The windows are approximately 40 years old and show typical signs of aging, including potential air and water leakage, degraded seals, reduced energy efficiency, and possible corrosion and/or frame deterioration.

Window Inspection

Component Decision	Good	Bad	Unknown
Window Frame		✗	
Latch			✗
Weather Strip		✗	
Sill		✗	
Glass	✗		

PHOTOS:



Photo 1 : Existing non-impact-rated window frame



Photo 2 : Existing non-impact-rated window frame



Photo 3 : Existing non-impact-rated window frame

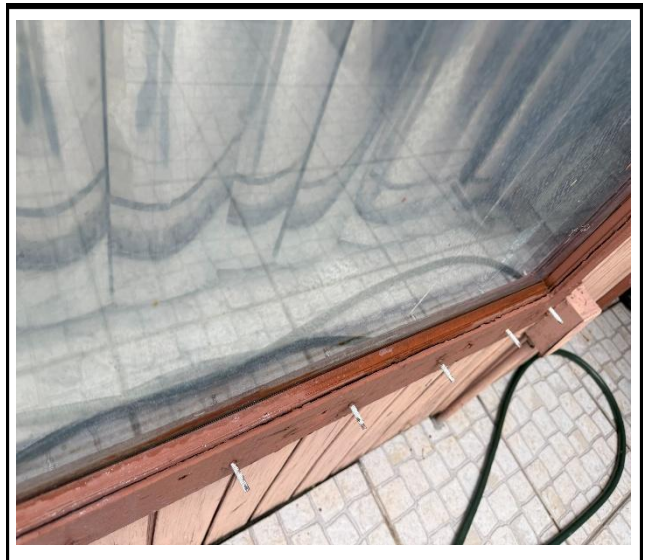


Photo 4 : Existing non-impact-rated window frame

Omega Villas Condominium

Phase No.: 03

Building No.: 15

Unit No.: 1753

Date: 06/20/2025

General Comments:

☐ Pass

☒ Fail

The windows are approximately 40 years old and show typical signs of aging, including potential air and water leakage, degraded seals, reduced energy efficiency, and possible corrosion and/or frame deterioration.

Window Inspection

Component Decision	Good	Bad	Unknown
Window Frame		✗	
Latch			✗
Weather Strip		✗	
Sill		✗	
Glass	✗		

PHOTOS:



Photo 1 : Existing non-impact-rated window frame



Photo 2 : Existing non-impact-rated window frame



Photo 3 : Existing non-impact-rated window frame



Photo 4 : Existing non-impact-rated window frame

Omega Villas Condominium

Phase No.: 03

Building No.: 15

Unit No.: 1757

Date: 06/20/2025

General Comments:

☐ Pass

☒ Fail

The windows are approximately 40 years old and show typical signs of aging, including potential air and water leakage, degraded seals, reduced energy efficiency, and possible corrosion and/or frame deterioration.

Window Inspection

Component Decision	Good	Bad	Unknown
Window Frame		✗	
Latch			✗
Weather Strip		✗	
Sill		✗	
Glass	✗		

PHOTOS:



Photo 1 : Existing non-impact-rated window frame



Photo 2 : Existing non-impact-rated window frame



Photo 3 : Existing non-impact-rated window frame



Photo 4 : Existing non-impact-rated window frame

Omega Villas Condominium

Phase No.: 03

Building No.: 15

Unit No.: 1761

Date: 06/20/2025

General Comments:

☐ Pass

☒ Fail

The windows are approximately 40 years old and show typical signs of aging, including potential air and water leakage, degraded seals, reduced energy efficiency, and possible corrosion and/or frame deterioration.

Window Inspection

Component Decision	Good	Bad	Unknown
Window Frame		✗	
Latch			✗
Weather Strip		✗	
Sill		✗	
Glass	✗		

PHOTOS:



Photo 1 : Existing non-impact-rated window frame



Photo 2 : Existing non-impact-rated window frame



Photo 3 : Existing non-impact-rated window frame

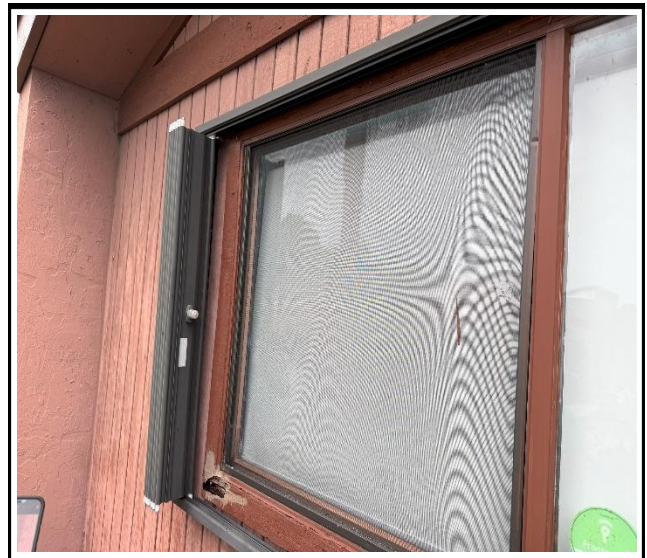


Photo 4 : Existing non-impact-rated window frame

Omega Villas Condominium

Phase No.: 03

Building No.: 15

Unit No.: 1765

Date: 06/20/2025

General Comments:

☐ Pass

☒ Fail

The windows are approximately 40 years old and show typical signs of aging, including potential air and water leakage, degraded seals, reduced energy efficiency, and possible corrosion and/or frame deterioration.

Window Inspection

Component Decision	Good	Bad	Unknown
Window Frame		✗	
Latch			✗
Weather Strip		✗	
Sill		✗	
Glass	✗		

PHOTOS:



Photo 1 : Existing non-impact-rated window frame



Photo 2 : Existing non-impact-rated window frame



Photo 3 : Existing non-impact-rated window frame



Photo 4 : Existing non-impact-rated window frame